

SEXUAL HEALTH COLLECTION KIT

A urine sample collection kit used for the collection and transportation of samples for laboratory analysis of sexually transmitted infections by nucleic acid technique (NAT)

This kit contains the materials required for either sample self-collection or collection by a health/social care professional.

IVD For *in vitro* diagnostic use, sample self-collection

Carefully read the enclosed instruction leaflet before use

Do not re-use

REF KT356

! Important: Do not use kit if security seal is broken. Keep out of reach of children

18+ For use by persons aged 18 and over

**UK
CA**

Sample collection instructions (Steps 1–12)

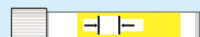
- Please ensure the kit is within expiry date and read these instructions carefully and completely before attempting to collect the sample.
- If your kit requires online activation, please follow the instructions provided by your healthcare organisation. If you need assistance please contact the healthcare organisation who arranged the test.
- You should not have urinated for at least 1 hour before sample taking.
- For alternative language versions of these kit instructions please visit www.tdlpathology.com

Your sample collection kit contents

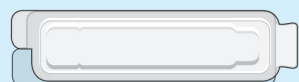
Please check that the kit contains all of the items outlined below. Do not proceed with sample taking if any items are missing, contact the healthcare organisation who arranged your test for assistance.



Sample transfer pipette



Urine specimen transport tube, IVD



Protective packing case

First name:
Surname:
DOB:
Sample type:
TAP4688822-10-01-07

Sample label



Urine collection box

Security Seal

To Open Box - Tear Seal & Lift Flap
MDX001.com

Return security label



Collection kit outer box



Return postal envelope

URINE SAMPLE COLLECTION

1 If not already pre-populated please complete the test request form, provided by your doctor/clinic, separate to this kit. **Make sure the sample date is completed.**



2 Clearly complete the sample collection tube label using a ball point pen with:

- Your First name
- Your Surname
- Your Date of birth
- Sample type: Urine



Do not affix it to the tube at this stage.

3 IMPORTANT SAMPLE TRACKING INFORMATION!

The enclosed postal envelope has a postal tracking label applied. Please make a note of the unique tracking number displayed under the barcode on the postal tracking label, as shown below. Keep this in a safe place for future reference.

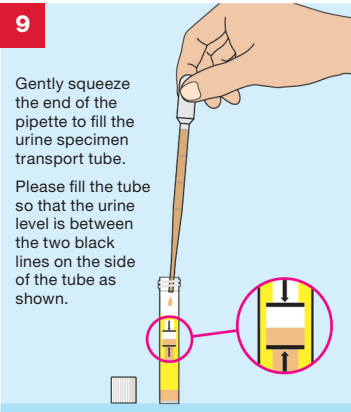
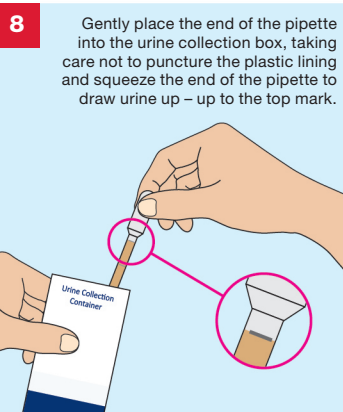
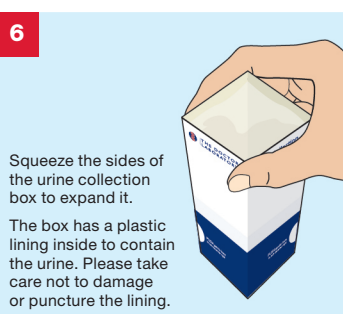
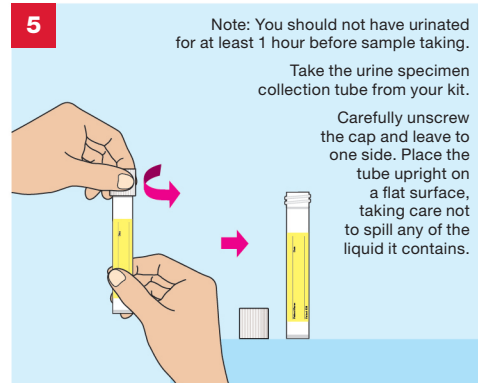
You can track delivery of your Royal Mail parcel by entering this number using the following link: <http://www.royalmail.com/track-your-item>



Write your tracking number here for reference – keep this safe.



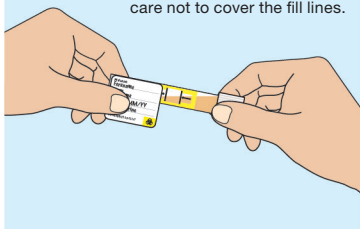
Wash hands using soap and water and dry them.



10

Screw the cap back firmly onto the urine specimen transport tube.

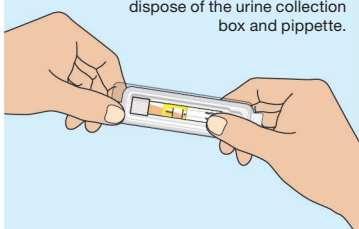
Apply the completed sample label onto the urine specimen transport tube as shown taking care not to cover the fill lines.



11

Place the urine specimen transport tube into the protective packing wallet and firmly close.

Discard any urine left in the collection box into a toilet and dispose of the urine collection box and pipette.



12 IMPORTANT CHECKLIST

Before you return your sample please do the following:

- ☐ Place your completed request form supplied by your doctor/clinic into the postal envelope
- ☐ Make sure the urine specimen transport tube is labelled and is placed inside the protective packing case
- ☐ Place the protective packing case into the collection kit outer box
- ☐ Close the collection kit outer box firmly and apply the return security label to seal it
- ☐ Place the collection kit outer box into the return postal envelope
- ☐ Check that you have taken note of your postal tracking number

**You are now ready to seal the postal envelope.
Please store at room temperature until posted.**

Please post your sample to **The Doctors Laboratory** as soon as possible (ideally on same day or within 24 hours of sample collection) from **ANY** Royal Mail post box in the UK. No stamp is required within the UK.

If you need assistance please contact The Doctors Laboratory on **020 7307 7373** or email **samples@tdlpathology.com**.

Warnings and precautions

- This kit is designed for use by persons aged 18 and over and upon request of a healthcare professional or healthcare organisation.
- The kit should not be used by individuals lacking the physical or mental capacity to correctly follow the self-collection instructions. If you have problems please consult with your advising healthcare professional.
- Do not affix the label to the urine specimen transport tube until after you have collected your sample. You will not be able to see how much urine you have collected if the label covers the tube.
- The Hologic transport buffer contains no substances which at their given concentration, are considered to be hazardous to health. In the case of contact with eyes, skin or mouth please and rinse thoroughly with clean water, if ingested please drink plenty of water and if any symptoms occur please consult a medical professional. In the case of spillages please wipe with absorbent paper and dispose in normal household waste. For further information please refer to safety datasheets which can be found at www.hologic.com or contact MolecularSupport@hologic.com.
- The accuracy of your results may be compromised if you do not read and follow the instructions in full.
- Samples arriving at the laboratory which show signs of degradation or general damage or arrive after 30 days (Aptima urine) of sample taking may not be tested.

Materials required but not provided

- Test request form**
This will be provided by your healthcare professional or healthcare organisation.
Please complete the request form with your details as instructed.
- Clean tissue paper**

Laboratory Tests

- The tests and procedures undertaken by The Doctors Laboratory Limited are verified and performed in line with supplier product instructions for use and supported by additional validation data for use with self-collected capillary blood.
- Test results are provided in line with clinically approved results pathways, agreed between The Doctors Laboratory Limited and the patients designated healthcare professional or healthcare organisation.

KEY TO SYMBOLS

IVD	For <i>in vitro</i> diagnostic use		Manufacturer	UK CA	UK Conformity Assessed
REF	Catalogue number		Temperature limits: 4°–25°C	CE	EU Conformity Assessed
LOT	Batch code		Caution, consult accompanying documents		Do not re-use
	Biological risk. Biological sample, treat as potentially infectious		Keep away from sunlight		Consult instructions for use
	Use by end of year-month		Keep dry	18+	For use by persons aged 18 and over



MedDX Services Ltd

Unit 2 Newtons Court, Crossways Business Park
Dartford, Kent, DA2 6QL, UK

E-mail: support@mdxsvc.com Website: www.mdxsvc.com

The Doctors Laboratory Limited

Distribution is restricted to regions in which the product is registered by the manufacturer.